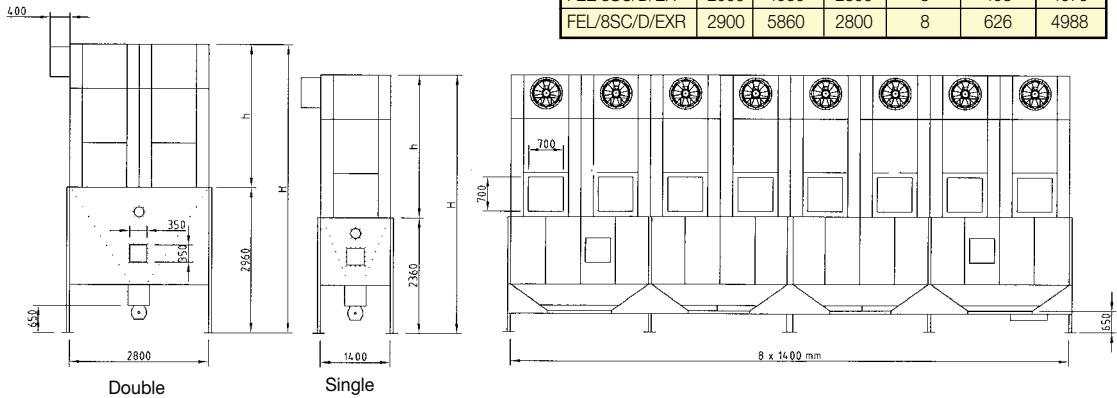


Screw Feed Filter Range



Specification						
Model	h mm	H mm	Width mm	No of Re-Gen Fans	Filter Area m ²	Weight Kg
FEL/3SC/S/ER	2000	4360	1400	3	76.5	1525
FEL/3SC/S/EXR	2900	5260	1400	3	118	1873
FEL/4SC/S/ER	2000	4360	1400	4	102	1970
FEL/4SC/S/EXR	2900	5260	1400	4	156	2450
FEL/4SC/D/ER	2000	4960	2800	4	176	2290
FEL/4SC/D/EXR	2900	5860	2800	4	313	2798
FEL/5SC/S/ER	2000	4360	1400	5	127	2432
FEL/5SC/S/EXR	2900	5260	1400	5	196	2940
FEL/5SC/D/ER	2000	4960	2800	5	255	2710
FEL/5SC/D/EXR	2900	5860	2800	5	391	3316
FEL/6SC/S/ER	2000	4360	1400	6	153	2805
FEL/6SC/S/EXR	2900	5260	1400	6	235	3430
FEL/6SC/D/ER	2000	4960	2800	6	306	3125
FEL/6SC/D/EXR	2900	5860	2800	6	469	3806
FEL/7SC/S/ER	2000	4360	1400	7	188.5	3310
FEL/7SC/S/EXR	2900	5260	1400	7	274	4035
FEL/7SC/D/ER	2000	4960	2800	7	357	3540
FEL/7SC/D/EXR	2900	5860	2800	7	548	4353
FEL/8SC/S/ER	2000	4360	1400	8	204	3668
FEL/8SC/S/EXR	2900	5260	1400	8	313	4524
FEL/8SC/D/ER	2000	4960	2800	8	408	4075
FEL/8SC/D/EXR	2900	5860	2800	8	626	4988

Totally enclosed bulk handling multi breather screw filter unit, model FEL/4SC/D/EXR with automatic regeneration filter cleaning fans, waste screw feed conveyor, bulk handling rotor valve and 75/K, 75 kW paddle blade fan set. The extracted waste is automatically transported to a waste storage silo and waste burning heating system.

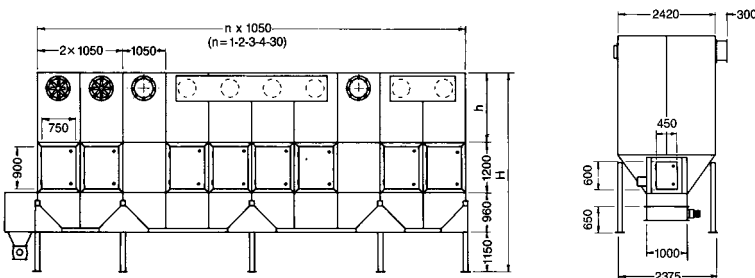


Chain Feed Filter Range



A 30 metre long totally, enclosed chain filter with re-gen filter cleaning fans and six 75K paddle blade fan sets with extracted waste being automatically conveyed to waste storage silo and waste burning heating system.

Specification						
Model	h mm	H mm	Width mm	No of Re-Gen Fans	Filter Area m ²	Weight Kg
FEL/3DF/1L/ER	1650	4960	2420	3	147	1220
FEL/3DF/1L/EXR	2100	5410	2420	3	174	1240
FEL/4DF/1L/ER	1650	4960	2420	4	196	1565
FEL/4DF/1L/EXR	2100	5410	2420	4	232	1590
FEL/5DF/1L/ER	1650	4960	2420	5	245	1910
FEL/5DF/1L/EXR	2100	5410	2420	5	290	1940
FEL/6DF/1L/ER	1650	4960	2420	6	294	2255
FEL/6DF/1L/EXR	2100	5410	2420	6	348	2290
FEL/7DF/2L/ER	1650	4960	2420	7	343	2785
FEL/7DF/2L/EXR	2100	5410	2420	7	406	2830
FEL/8DF/2L/ER	1650	4960	2420	8	392	3130
FEL/8DF/2L/EXR	2100	5410	2420	8	464	3177
FEL/9DF/2L/ER	1650	4960	2420	9	441	3475
FEL/9DF/2L/EXR	2100	5410	2420	9	522	3530
FEL/10DF/2L/ER	1650	4960	2420	10	490	4160
FEL/10DF/2L/EXR	2100	5410	2420	10	580	4225



Due to the continued improvement of our products, specifications may vary from those provided in this leaflet. We reserve the right to alter specifications and dimensions without prior notice. Any non standard sizes manufactured to specific requirements. All dimensions quoted are approximate.

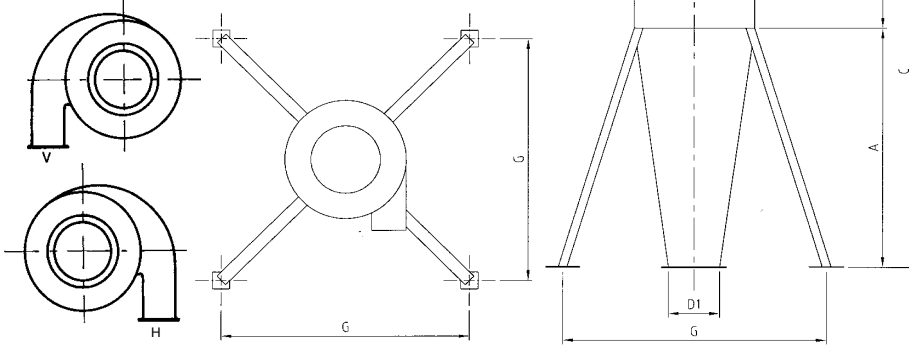


FE/C Range of Cyclones

Fercell high efficiency cyclones are used for handling small grained particles in transportation and extraction systems.

The cyclones are constructed in such a way that they achieve an efficiency considerably greater than normal cyclones.

The cyclones are constructed by fully welding all joints and finished in blue enamel

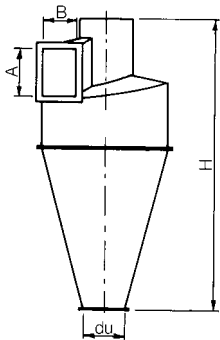


Dimensional specifications are given in the table below. V = left, H = right

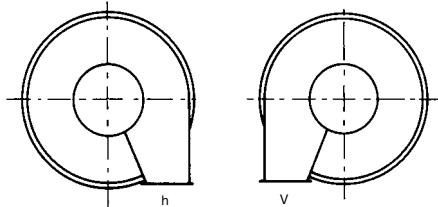
Specification											
Model	Volume Capacity cu/mtr/hr	A mm	B mm	C mm	D mm	D1 mm	D2 mm	E mm	F mm	G mm	Weight Kg
CA	2700/3600	1100	850	1950	700	200	350	147	210	2000	100
CB	3600/6000	1400	950	2350	800	250	400	180	235	2200	120
CD	6100/8300	1800	1250	3050	1000	320	500	210	310	2500	165
CE	8300/12000	2200	1450	3650	1200	400	600	300	430	2700	220
CF	12000/21000	2700	1850	4550	1600	450	800	300	520	3000	330



FE/GS Range of Cyclones



Dimensional specifications are given in the table below
V = left
h = right



The Fercell FE/GS Range of cyclones are manufactured in prime galvanised sheet steel.

Sizes range from 1 metre diameter to 4.6 metre diameter with air handling capacities up to 47,000 cu/mtr/hr.

Standard Specification					
Diameter mm	Overall Height	Inlet Size		Waste Discharge Dia.(du)	Maximum Air Volume Capacity cu/mtr/hr
	H mm	A mm	B mm		
1000	1950	320 x 230		180	2400
1200	2180	370 x 255		200	4600
1380	2400	400 x 295		200	5200
1500	2800	460 x 320		250	6000
1680	3000	510 x 355		275	6900
1800	3250	545 x 410		300	7600
2000	3400	595 x 420		300	9000
2300	4100	685 x 480		350	12000
2450	4300	725 x 510		375	13700
2600	4500	775 x 550		375	15000
2900	5000	860 x 610		425	19000
3200	5550	950 x 675		450	23000
3500	6000	1050 x 740		500	28000
3800	6600	1140 x 800		550	34000
4100	7150	1230 x 860		600	38000
4600	7900	1370 x 965		650	47000



Due to the continued improvement of our products, specifications may vary from those provided in this leaflet. We reserve the right to alter specifications and dimensions without prior notice. Any non standard sizes manufactured to specific requirements. All dimensions quoted are approximate.

