

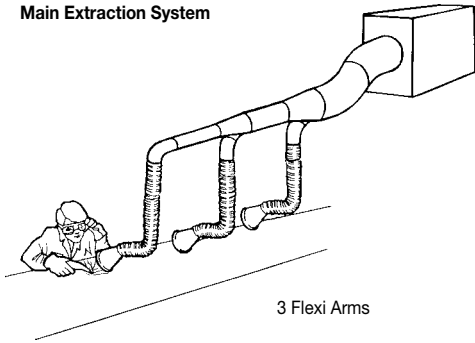
FLEXI-ARM - Low cost, versatile, fume, dust and waste extractor arm

The Ferrell 'Flexi-Arm' has been specifically designed for use in workshops and laboratories throughout industry.

The 'Flexi-Arm' can be easily fitted to existing ductwork or it can be used in conjunction with a variety of dust extraction units and systems.

The pivoted 'Flexi-Arm' can be moved around to enable the user to position the hood exactly over the desired working area.

Main Extraction System

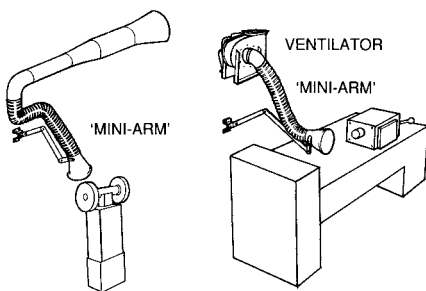


Specification	
Suction Face Aperture	190mm diameter
Suction Hose Diameter	125mm
Finish	Powder Coated
Suction Hood	Tough, Durable
Weight	4 Kg

- Tough durable multi-position hood
- Strong flexible suction hose
- Extends to 1.5m approx.
- Lightweight

MINI-ARM - Low cost, versatile, fume, dust and waste extractor arm

The Ferrell 'Mini-Arm' has been specifically designed for use in workshops and laboratories throughout industry. Manufactured from heavy-gauge steel box section, the 'Mini-Arm' can be easily fitted to existing ductwork or it can be used in conjunction with a variety of dust extraction units and systems.



The pivoted steel 'Mini Arm' can be moved around to enable the user to position the hood exactly over the desired working area.

- Tough durable multi-position hood
- Strong flexible suction hose
- Extends to 1m approx.
- Lightweight

Specification	
Suction Face Aperture	205mm diameter
Suction Hose Diameter	100mm
Suction Hood	Tough, Durable
Weight	4 Kg (inc. Hose and Clips)



For bench, wall or ceiling mounting, the 'Mini-Arm' is supplied boxed in 'simple-to-assemble' kit form. The kit comprises of a box sectional steel arm, pivot joints, tough, durable, multi-position hood, flexible suction hose (1.5m long x 100mm dia.), hose clips, mounting bracket and fixing screws.

Due to the continued improvement of our products, specifications may vary from those provided in this leaflet. We reserve the right to alter specifications and dimensions without prior notice. Any non standard sizes manufactured to specific requirements. All dimensions quoted are approximate.

IBS Articulated Suction Arms



Structural Features

This unit consists of a self-supporting structure made entirely of light aluminium alloy to combine sturdiness with lightweight.

The light aluminium alloy hood is fitted with an air flow regulator and an internal swivel joint to allow a full 360° movement of the arm.

Accurate self-compensation and self-bearing is achieved by means of a tension spring and ceramic fibre clutch system.

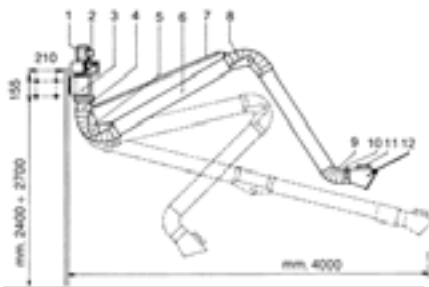
The 160mm diameter of the intake pipe allows for a wide range of air flow rates, due to the interchangeability of the suction units, providing a greater versatility of use and installation.

The pipe joints are made of flexible, flame-resistant P.V.C.

Note: All models are fitted with an air flow regulator.

These units are for the intake of smoke and airborne pollutants from specific sources

IBS 4000 Articulated for the suction of smoke and airborne pollutants from specific sources



1. Single or 3 Phase electric motor
2. Centrifugal fan
3. Arm support
4. Swinging joint
5. Main joint
6. Light-alloy metal pipe
7. Balance spring
8. Flexible heat-resistant pipe
9. Rod joint
10. Air regulator lever
11. Inlet handle
12. Inlet and air regulator

Articulated Arms without Electric Fan

Specification				
Model	Diameters mm	Reach Length mm	Description	Max Weight Kg
IBS 2000	125-160-200	2000	complete with wall arm support	23
IBS 3000	125-160-200	3000	complete with wall arm support	29
IBS 4000	125-160-200	4000	complete with wall arm support	32
IBS 5000	125-160-200	5000	complete with extensions support L.1000 and wall arm support	42
IBS 6000	125-160-200	6000	complete with extensions support L.2000 and wall arm support	52
IBS 7000	125-160-200	7000	complete with extensions support L.3000 and wall arm support	55
IBSC 2000	125-160-200	2000	complete with wall arm support for structure on wheels	23
IBSC 3000	125-160-200	3000	complete with wall arm support for structure on wheels	29
IBSC 4000	125-160-200	4000	complete with wall arm support for structure on wheels	32

Articulated Arms complete with Electric Fan

Specification						
Model	Type	Flow Rate m ³ /h	Power		Noise Level @ 2 mtr dB(A)	Weight Kg
			kW	Phase		
IBS 4000/12	articulated arm with electric fan for welding	1200	0.55	single or 3	68	35
IBS 4000/15	articulated arm with electric fan for welding	2000	1.1	single or 3	70	40
IBS 4000/30/2	double arm with electric fan for welding	4000	2.2	single or 3	70	60
IBSP 4000/20	articulated arm with electric fan for welding dust/gas/vapour	1500	1.1	single or 3	73	50
IBSP 4000/25	articulated arm with electric fan for welding dust/gas/vapour	2000	2.2	single or 3	75	55

Due to the continued improvement of our products, specifications may vary from those provided in this leaflet. We reserve the right to alter specifications and dimensions without prior notice. Any non standard sizes manufactured to specific requirements. All dimensions quoted are approximate.



Versatile, Fume and Dust Extractor Arm

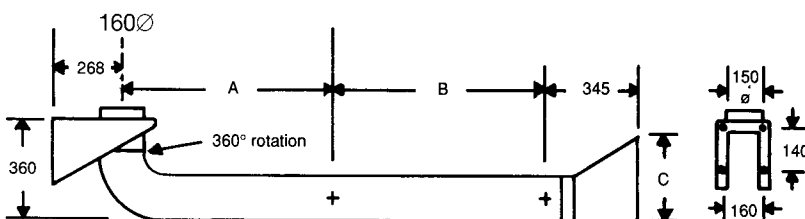
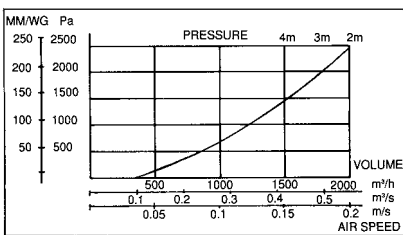
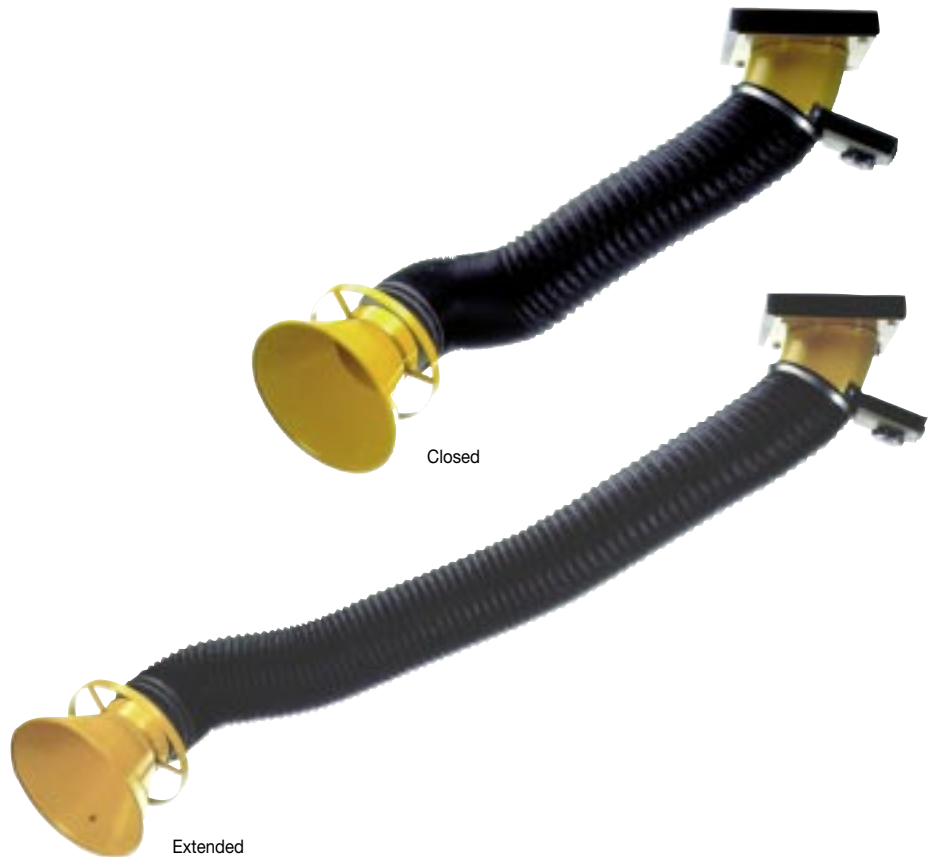
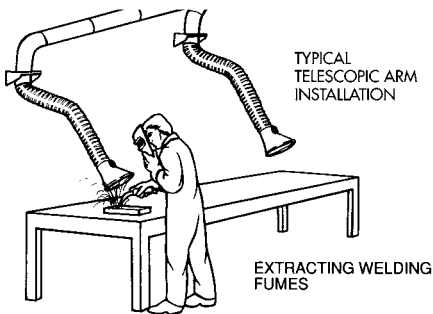
The telescopic fume and dust extractor arm will perform a variety of extraction tasks in most types of industrial applications.

It can be bench or wall-mounted or it can be connected to independent ventilators. The telescopic arm can also be linked to a fixed ducting system for multi-unit installation.

Utilising a tough, variable-position hood and a strong flexible hose.



Telescopic arm with 1.5 metre swinging gantry arm.



All dimensions in mm.

- Tough Durable
- Multi-position Hood
- Strong Flexible Suction Hose

Model	A mm	B mm	C Dia. mm	Overall Reach mm	Weight Kg
CP2000	1000	1000	310	2000	10.3

Due to the continued improvement of our products, specifications may vary from those provided in this leaflet. We reserve the right to alter specifications and dimensions without prior notice. Any non standard sizes manufactured to specific requirements. All dimensions quoted are approximate.

